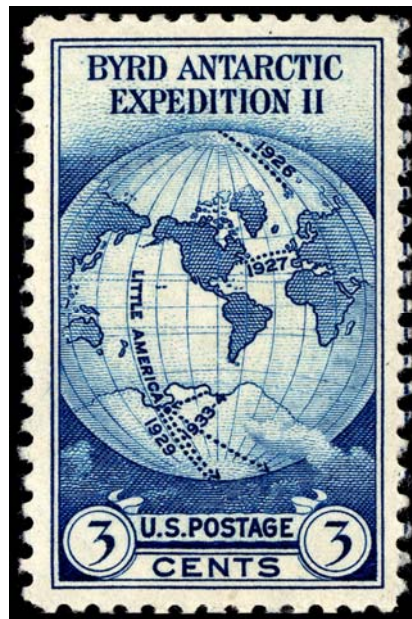


---

ALLAN LEE'S COLLECTION OF  
"MAPS ON STAMPS"

FINDING GUIDE

---



*The World on Van der Grinten's Projection*

Prepared by Thomas Lera, Winton Blount Research Chair  
and  
Miklos Pinther, Chief Cartographer, United Nations (retired)



Smithsonian  
*National Postal Museum*

This revision was published on March 17, 2009  
This finding guide is available online at <http://postalmuseum.si.edu/findingguides>  
Check online to be certain you have the latest revision.

# Table of Contents

Collection Scope & Content .....	3
History .....	3
Narrative Description.....	4
Container Inventory .....	4
Bibliography.....	8
Credits & Acknowledgments .....	15

---

## COLLECTION SCOPE & CONTENT

---

This is a specialized collection of *Maps on Stamps*. It consists of twenty-six albums organized into categories and mounted under subtopics: (1) The World Minutely Mapped, (2) Elements of a Map, (3) Geographical Areas, (4) Nations, (5) Islands and Archipelagos, (6) Genesis of the United States, (7) Routes, (8) Ancient Maps and Plans, (9) Political and Territorial Disputes, (10) Errors and Varieties, (11) Miscellanea, (12) Souvenir Sheets, (13) Unusual Stamps, (14) Omnibus Issues, (15) Marginal Map Stamps, and (16) Collateral Material.

---

## HISTORY

---

From childhood, Allan Lee, the donor of this collection, was obsessed with a curiosity and interest in the geography and history of the world. During service overseas in World War II, as an officer in the Corps of Engineers, he chanced upon Walter Klinefelter's series of articles published under the title, "*The World in One's Vestpocket.*" As an engineer, it was only natural that the subject, maps on stamps, should fascinate him. While he was determined to collect every type of stamp showing a map, it was impractical to start such a massive project until the war ended and he returned to the United States.

One of the things he learned during the interrogation of an Italian intelligence agent was that a postal service by relay cycles had been established in the "Italian Socialist Republic." This unusual method of delivering mail had been occasioned by the great success of Allied bombing, which disrupted railways and highways. Upon returning from his next mission, the agent thoughtfully brought some of the stamps being used behind the German lines which showed a map of northern Italy. Thus the collection started with this stamp.



*The stamp that started Allan Lee's "Maps on Stamps" collection*

By the end of 1976 every type of map stamp cataloged by Scott, Minkus and Stanley Gibbons had been acquired. Related designs also had been added and for greater clarity, only mint issues were included. The format for mounting the collection was inspired by the scheme employed in "*The World Minutely Mapped,*" which was published by Walter Klinefelter in 1952 and listed in detail in the bibliography. The first four albums consist of pages from Klinefelter's book reproduced to fit on the album page with Lee's stamps mounted directly on the page (see illustration below).

---

## NARRATIVE DESCRIPTION

---

There are twenty-six albums containing stamps, covers, postal cards and souvenir sheets with maps depicted from different countries.

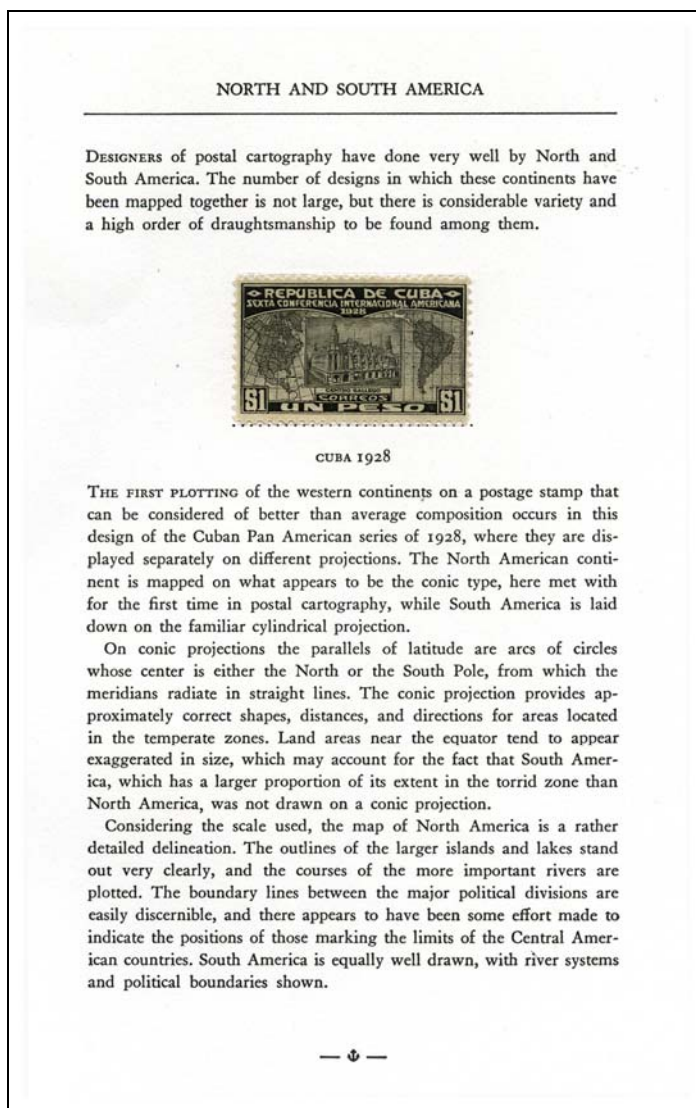
---

## CONTAINER INVENTORY

---

**Album 1** – 53 pages with one stamp, a Foreword, an Introductory Explanation of each subject and a List of Contents of the remaining 25 volumes

**Album 2** – 54 pages of *The World Minutely Mapped* – different types of projections, the oceans, the Western Hemisphere and North and Central America



The pages of the first four albums of this collection are actually Walter Klinefelter's 1952 book *The World Minutely Mapped - An Atlas on Postal Paper* which has maps by various hands and text reproduced by Bryon Weston Company of Dalton Massachusetts. To assure its uniqueness, the printing of the albums was limited to a single copy. Contributing further to its uniqueness and value, Mr. Lee mounted the appropriate stamps in mint condition on each page.

**Album 3** – 51 pages of *The World Minutely Mapped* – South America, Antarctica and the Caribbean Islands

**Album 4** – 55 pages of *The World Minutely Mapped* – the Eastern Hemisphere, Europe, the U.S.S.R. and Eastern Asia

**Album 5** – 56 pages of *The World Minutely Mapped* – Africa, Western Asia and the Pacific Islands



*Flemish Cartographer Gerardus Mercator*



*Europe Sectional Map and Compass Rose*

**Album 6** – 39 pages of *The Elements of a Map* – map projections, grids, scale, relief, compass roses and symbols



*Portolanos were charts made by and for seamen during the Middle Ages using rhumb lines.*

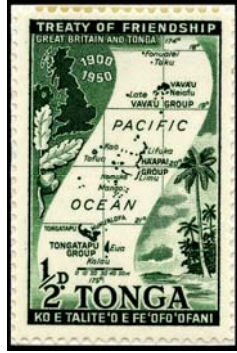
**Album 7** - 67 pages of *Geographical Areas* - the World, Asia, Americas, Africa, Europe, Polar Regions and Water Areas

**Album 8** - 59 pages of *Nations* - countries listed alphabetically starting with Afars and Issas to Ethiopia

**Album 9** - 60 pages of *Nations* - countries listed alphabetically from Finland to Romania

**Album 10** - 44 pages of *Nations* - countries listed alphabetically from Russia to Zambia and 21 pages of Islands and Archipelagos listed alphabetically from Aegean Islands to British Virgin Islands

**Album 11** - 62 pages of *Islands and Archipelagos* - alphabetically from Castellorizo to Martinique



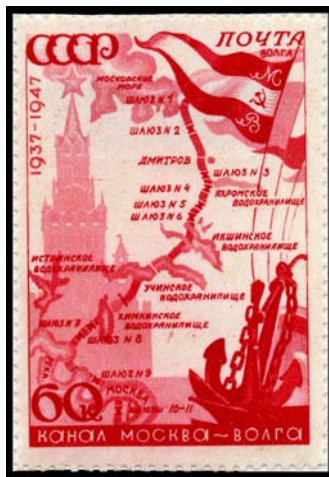
*Tonga*



*Falkland Islands*

**Album 12** – 61 pages of Islands and Archipelagos – alphabetically from Mauritius to Zanzibar

**Album 13** – 31 pages of the Genesis of the United States – including Jamestown, Louisiana Purchase and various states, and 29 pages of Routes – including tunnels, flight routes, highways and shipping lanes listed alphabetically by country from Albania to Czechoslovakia



*U.S.S.R. – The Moscon-Volga Canal*



*Turkey – The Dardanelles*

**Album 14** – 59 pages of Routes – including flight routes, power line routes, military routes, caravan routes and shipping lanes listed alphabetically by country from Ecuador to Monaco

**Album 15** – 61 pages of Routes – including flight routes, power line routes, military routes, caravan routes and shipping lanes listed alphabetically by country from Monaco to Zambia

**Album 16** – 59 pages of Ancient Maps and Plans – as drawn by English, Spanish and Portuguese explorers listed alphabetically by country from Aitutaki to Luxembourg



*China – Ichang Foreign Settlements*



*Australia Overprint*

**Album 17** - 60 pages of Ancient Maps and Plans - as drawn by English, Spanish and Portuguese explorers listed alphabetically by country from Mozambique to Zaragoza

**Album 18** - 59 pages of Miscellanea - *Graf Zeppelin's* map stamps, weather map stamps, overprints, surcharges and battle maps

**Album 19** - 55 pages of Errors and Varieties - listed alphabetically by country from Argentina to the United States

**Album 20** - 41 pages of Political and Territorial Disputes - listed alphabetically by country from British and Argentine Claims to the Vietnamese Civil War and 25 pages of Souvenir Sheets - listed alphabetically by country from Anguilla to the Dominican Republic

**Album 21** - 63 pages of Souvenir Sheets - listed alphabetically by country from Egypt to Zambia

**Album 22** - 66 pages of Unusual Stamps- stylized designs and stamps that require more than one stamp to project a map, listed alphabetically from Austria to the United Arab Republic

**Album 23** - 53 pages of Omnibus Issues - stamps issued identically or similarly designed stamps by several countries commemorating some occasions of mutual interest including UPU issues, Commissions, Banks, Tourism

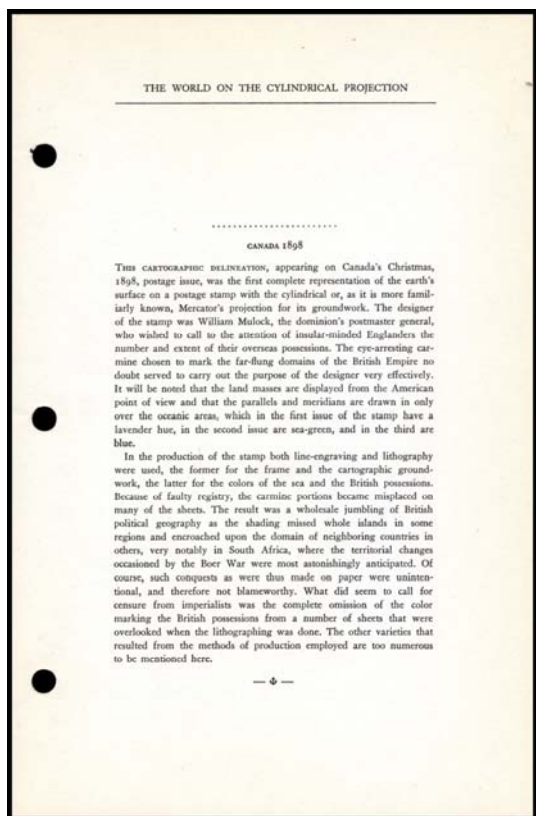
**Album 24** - 56 pages of Marginal Map Stamps - maps of inferior design as categorized by Mr. Lee

**Album 25** - 68 pages of Collateral Material - Essays listed alphabetically by country from Algeria to Viet Nam; Locals from Biafra to Shuna; Semi-Officials from Anti-Bolshevik Corps to London

**Album 26** - 75 pages of Collateral Material - Revenues listed alphabetically by country and type from Argentina to World Telecommunication Conferences; Labels from Aosta to Wayzata; Phantasies from Clipperton Island to Vichy France

## BIBLIOGRAPHY

*The World Minutely Mapped - An Atlas on Postal Paper* which has maps by various hands and text by Walter Klinefelter, Voyageur Press, 1952, [223] p., 14x21.5 cm. (60 copies printed).  
NPM Library Number HE6183.M3K64 1952



This is a page from Klinefelter's book. The book is designed to be an album with places to mount stamps above or below the description. Most pages are for only one stamp, however, there are several with places for two or more stamps.

The NPM library copy does not have any stamps mounted on its pages.

The new list below, prepared by Miklos Pinther, identifies the Scott Number for each stamp.

### CONTENTS of *The World Minutely Mapped - An Atlas on Postal Paper* (stamps identified by Scott numbers)

Area (page heading)	Page	Issuing Entity	Year	Scott No.
[Title page]	[1]			
[Copyright page]	[2]			
A Note on the Composition of this Atlas	[3]			
The World on Cylindrical Projection	[4]	Canada	1898	85
The World on Cylindrical Projection	[5]	New Zealand	1940	237
The World on Cylindrical Projection	[5]	Argentina	1946	558
The World on the Elliptical Projection	[6]	Japan	1927	200
The World on the Globular Projection	[7]	Australia	1934	C4
The World on the Stereographic Projection	[8]	Guatemala	1946	C141
The World on the Sterographic Projection	[9]	Belgium	1949	400
The World on Van der Grinten's Projection	[10]	United States	1933	733
The World on the Azimuthal Projection	[11]	Philippines	1947	516
The World on the Azimuthal Projection	[12]	United Nations	1951	3
The World on the Azimuthal Projection	[12]	Siam	1951	330
The Western Hemisphere	[13]	Peru	1937	C48



The Western Hemisphere	[14]	Guatemala	1938	C92
The Western Hemisphere	[14]	Chile	1940	210
The Western Hemisphere	[14]	Chile	1940v	210v
The Western Hemisphere	[15]	Mexico	1945	792
The Western Hemisphere	[15]	Mexico	1945	C143
The Western Hemisphere	[16]	Colombia	1950	C199
The Eastern Hemisphere	[17]	Switzerland	1949	324
The Eastern Hemisphere	[18]	Czechoslovakia	1949	391
The Eastern Hemisphere	[18]	Ceylon	1949	306
The Eastern Hemisphere	[19]	Colombia	1950	587
The Atlantic Ocean	[20]	Brazil	1937	445
The Atlantic Ocean – Northern Sector	[21]	Newfoundland	1931	C8
The Atlantic Ocean – Northern Sector	[21]	Iceland	1938	B6
The Atlantic Ocean – Northern Sector	[22]	Iceland	1939	214
The Atlantic Ocean – Northern and Middle Sectors	[23]	Brazil	1945	632
The Pacific Ocean – Northern Sector	[24]	Russia	1943	887
The Pacific Ocean – Middle and Southern Sectors	[25]	Pitcairn Islands	1940	5
The Arctic Ocean	[26]	Russia	1932	C34
The Arctic Ocean	[27]	Russia	1938	625
The Arctic Ocean	[28]	Russia	1940	775
North and South America	[29]	Cuba	1928	284
North and South America	[30]	Mexico	1942	779
North and South America	[30]	Cuba	1944	393
North and South America	[31]	Ecuador	1946	453
North America	[32]	Colombia	1948	560
North and South America – Sectional Maps	[33]	Haiti	1924	317
North and South America – Sectional Maps	[33]	Ecuador	1943	417
Iceland	[34]	Iceland	1930	163
Iceland	[34]	Iceland	1934	C19
Iceland	[35]	Iceland	1949	255
Canada	[36]	Canada	1927	145
Newfoundland	[37]	Newfoundland	1908	86
Newfoundland	[37]	Newfoundland	1928	145
Newfoundland	[37]	Newfoundland	1929	163
Newfoundland	[38]	Newfoundland	1933	223
St. Pierre and Miquelon	[39]	St. Pierre and Miquelon	1932	136
The United States	[40]	United States	1904	239
The United States	[41]	United States	1937	795
The United States – The Northwest	[42]	United States	1936	783
The United States – The Northwest	[42]	United States	1939	858
The United States – Iowa and Florida	[43]	United States	1946	942
The United States – Iowa and Florida	[43]	United States	1947	952
The United States – New York City	[44]	United States	1948	C38
The United States – Annapolis and Vicinity	[45]	United States	1949	984
Mexico, Central America and the West Indies	[46]	Canal Zone	1939	C16
Mexico	[47]	Mexico	1915	512
Central America	[48]	Salvador	1924	500
Central America	[48]	Salvador	1924v	500a
Central America	[48]	Nicaragua	1937	C206
Guatemala	[49]	Guatemala	1950	337
British Honduras – St. George’s Cay	[50]	British Honduras	1949	131
Honduras	[51]	Honduras	1927	253
Honduras	[52]	Honduras	1935	C79
Honduras	[52]	Honduras	1939	338
Nicaragua	[53]	Nicaragua	1896	81
Nicaragua	[53]	Nicaragua	1937	C186

Salvador	[54]	Salvador	1942	C85
Supplementary Maps [note for ordering blank sheet]	[55]			
The United States – Ohio	[56]	United States	1953	1018
The Eastern Continents – Sectional Maps	[57]	Russia	1927	379
The Eastern Continents – Sectional Maps	[57]	Russia	1931	C18
The Eastern Continents – Sectional Maps	[58]	Italy	1937	C98
The Eastern Continents – Sectional Maps	[59]	Egypt	1949	280
The Northeastern Mediterranean Area	[60]	Greece	1933	C12
Europe	[61]	Germany	1942	B209
Europe – Sectional Map	[62]	Sweden	1944	348
Ireland	[63]	Ireland	1922	66
Netherlands	[64]	Netherlands	1935	B81
Andorra	[65]	Andorra	1951	48
Saar	[66]	Saar	1948	201
Poland – Sectional Map	[67]	Poland	1946	B47
Lithuania and Estonia	[68]	Lithuania	1932	C47
Estonia	[68]	Estonia	1923	78
Finland – Old Helsinki	[69]	Finland	1950	297
Switzerland-Vierwaldstatterese Area	[70]	Switzerland	1941	B110
Monaco	[71]	Monaco	1942	C2
Monaco	[72]	Monaco	1946	201
Monaco	[72]	Monaco	1946	202
Monaco	[72]	Monaco	1946	C15
Italy	[73]	Italy	1932	301
Italy	[73]	Italy	1936	355
San Marino	[74]	San Marino	1943	C26
Jugoslavia	[75]	Jugoslavia	1940	B111
Croatia	[76]	Croatia	1944	B75
Albania	[77]	Albania	1940	C48
Greece	[78]	Greece	1930	359
Greece	[79]	Greece	1951	544
Greece and Some of its Islands	[80]	Greece	1933	C15
Greece and Some of its Islands	[80]	Greece	1933	C19
Greece – Island Possessions	[81]	Castellorizo	1923	60
Greece – Island Possessions	[81]	Greece	1950	523
Bulgaria	[82]	Bulgaria	1921	153
Bulgaria	[82]	Bulgaria	1947	B17
Bulgaria – Sectional Maps	[83]	Bulgaria	1940	362
Bulgaria – Sectional Maps	[83]	Bulgaria	1941	393
Romania	[84]	Romania	1927	B21
Romania	[84]	Romania	1935	B52
Romania – Sectional Maps	[85]	Romania	1942	B195
Romania – Sectional Maps	[85]	Romania	1944	B251
The U. S. S. R.	[86]	Russia	1949	C88
The U. S. S. R. – The Moscow-Volga Canal	[87]	Russia	1947	1151
The U. S. S. R. – Sectional Map	[88]	Russia	1949	1396
The U. S. S. R. – The Ukrainian-Crimean Canal	[89]	Russia	1951	1598
The U. S. S. R. – The Volga-Don Canal	[90]	Russia	1951	1599
The U. S. S. R. – The Turkmen Canal	[91]	Russia	1951	1601
The U. S. S. R. – The Fergana Valley	[92]	Russia	1949	1433
The U. S. S. R. – Far Eastern Siberia	[93]	Russia	1949	1324
Turkey	[94]	Turkey in Asia	1922	88
Turkey	[94]	Turkey	1928	RA1
Turkey	[94]	Turkey	1928	RA4
Turkey	[95]	Turkey	1940	851
Turkey	[95]	Turkey	1950	1007

Turkey – The Dardanelles	[96]	Turkey	1916	426
Turkey – The Dardanelles	[96]	Turkey	1916	428
Cyprus	[97]	Cyprus	1928	116
Cyprus	[97]	Cyprus	1938	149
Hatay	[99]	Hatay	1939	12
Syria	[100]	Syria	1943	288
Jordan	[101]	Transjordan	1946	221
Jordan – Jordan River Valley	[102]	Transjordan	1952	270
Egypt and Palestine – Military Campaign Map	[103]	Egypt	1948	271
Saudi Arabia	[104]	Saudi Arabia	1946	RA4B
Iran	[105]	Persia	1949	914
Iran – Azerbaijan Province	[106]	Persia	1950	B25
Central America	[107]	Nicaragua	1953	741
Venezuela – Delta Amacuro	[108]	Venezuela	1953	548
Brazil – Sectional Maps	[109]	Brazil	1953	741
Brazil – Sectional Maps	[109]	Brazil	1953	746
The U. S. S. R. – Maps of Military Campaigns	[110]	Russia	1930	434
The U. S. S. R. – Maps of Military Campaigns	[110]	Russia	1940	813
India – Jaipur	[111]	Jaipur	1948	51
China	[112]	China	1939	364
China – Ichang Foreign Settlements	[113]	Ichang	1894	LI-8
China – Shanghai	[114]	China	1944	9N105
China – Formosa	[115]	China	1947	762
Tannu Tuva	[116]	Tannu Tuva	1927	20
Tannu Tuva	[116]	Tannu tuva	1934	54
Tannu Tuva	[117]	Tannu Tuva	1935	71
Korea	[118]	Korea	1946	71
Korea	[118]	Korea	1949	110
Manchukuo	[119]	Manchukuo	1937	121
Manchukuo	[119]	Manchukuo	1938	128
Manchukuo	[120]	Manchukuo	1939	130
Manchukuo	[120]	Manchukuo	1942	144
Japan	[121]	Japan	1930	208
Japan	[121]	Japan	1949	474
The Ryukyu Islands	[122]	Ryukyu Islands	1950	C1
The Ryukyu Islands	[122]	Ryukyu Islands	1950	E1
Manchukuo and Japan	[123]	Manchukuo	1936	79
Asia and Oceania – Sectional Maps	[124]	North Borneo	1939	198
Asia and Oceania – Sectional Maps	[124]	Dutch Indies	1943	N1
Asia and Oceania – Sectional Maps	[125]	Philippines	1950	551
Asia and Oceania – Sectional Maps	[125]	Philippines	1952	578
Africa	[126]	Liberia	1928	233
Africa	[126]	Cape Verde	1939	252
Africa – Sectional Maps	[127]	Dahomey	1939	108
Africa – Sectional Maps	[127]	Gold Coast	1948	134
Morocco	[128]	French Morocco	1950	CB36-39
Morocco – The City of Tangier	[129]	Spanish Morocco	1948	L18
Spanish Sahara	[130]	French West Africa	1947	C11
The Cape Verde Islands	[131]	Cape Verde	1952	277
The Cape Verde Islands	[131]	Cape Verde	1952	286
Sierra Leon	[132]	Sierra Leon	1933	155
Liberia – Sectional Maps	[133]	Liberia	1940	277
Liberia – Sectional Maps	[133]	Liberia	1952	C69
Liberia	[134]	Liberia	1947	308
Liberia	[134]	Liberia	1949	C63
Liberia – The Towns of Harper and Marshall	[135]	Liberia	1952	334

Liberia – The Towns of Harper and Marshall	[135]	Liberia	1952	335
Liberia – Upper Buchanan and Monrovia	[136]	Liberia	1952	336
Liberia – Upper Buchanan and Monrovia	[136]	Liberia	1952	C68
Ivory Coast	[137]	French West Africa	1952	58
Ascension	[138]	Ascension	1934	24
St. Helena	[139]	St. Helena	1934	103
St. Helena	[139]	St. Helena	1953	148
Nyasaland	[140]	Nyasaland	1945	71
Oltre Giuba	[141]	Oltre Giuba	1926	29
British Somaliland	[142]	Somaliland	1938	92
Ethiopia	[143]	Ethiopia	1952	331
Eritrea – Sectional Map	[144]	Italian Colonies	1933	C19
Fezzan-Ghadames and Fezzan	[145]	Fezzan-Ghadames	1946	1N11
Fezzan-Ghadames and Fezzan	[145]	Fezzan	1948	2NC2
Madagascar	[146]	Madagascar	1935	C1
Madagascar	[146]	Madagascar	1946	C53
Reunion	[147]	Reunion	1907	7
Mauritius	[148]	Mauritius	1950	241
Afrasia – Sectional Maps	[149]	Seychelles	1952	161
Afrasia – Sectional Maps	[149]	Aden	1953	53
Sarawak	[150]	Sarawak	1950	193
North Borneo	[151]	North Borneo	1950	249
Philippines	[152]	Philippines	1937	425
Philippines	[152]	Philippines	1950	537
Philippines	[153]	Philippines	1943	N26
Papua and New Guinea	[154]	Papua and New Guinea	1952	135
Australia	[155]	New South Wales	1888	85
Australia	[155]	Australia	1913	1
New Zealand	[156]	New Zealand	1923	175
New Zealand	[156]	New Zealand	1940	230
New Zealand – Western Coast	[157]	New Zealand	1940	232
New Caledonia – St. Vincent’s Bay	[158]	New Caledonia	1948	C21
Fiji Islands	[159]	Fiji	1938	120
Fiji Islands	[159]	Fiji	1940	133
Tonga	[160]	Tonga	1951	94
Tonga and Tongatapu	[161]	Tonga	1953	109
Tonga and Tongatapu	[161]	Tonga	1953	104
Niue	[162]	Niue	1950	94
Western Samoa	[163]	Samoa	1939	182
Tokelau Islands	[164]	Tokelau Islands	1948	1
Tokelau Islands	[164]	Tokelau Islands	1948	2
Tokelau Islands	[164]	Tokelau Islands	1948	3
Cook Islands	[165]	Cook Islands	1949	138
The Southern Cooks – Sectional Maps	[166]	Cook Islands	1949	132
The Southern Cooks – Sectional Maps	[166]	Cook Islands	1949	133
The Southern Cooks – Sectional Maps	[166]	Cook Islands	1949	134
Blank page [colored stock]	[167]			
Supplementary Maps [note for ordering blank sheet]	[168]			
Costa Rica and the Province of Guanacaste	[169]	Costa Rica	1923	126
Costa Rica and the Province of Guanacaste	[169]	Costa Rica	1924	129
Costa Rica – Cocos Island	[170]	Costa Rica	1936	169
Panama	[171]	Panama	1887	8
Panama	[171]	Panama	1888	9
Panama	[172]	Panama	1892	15
Panama	[172]	Panama	1905	179
Panama – The Isthmus of Panama	[173]	Panama	1915	205

Panama – The Isthmus of Panama	[173]	Panama	1948	C103
Canal Zone – Barro Colorado Island	[174]	Canal Zone	1948	141
Curaçao – Sectional Map	[175]	Curaçao	1942	C20
Cayman Islands	[176]	Cayman Islands	1950	127
Cuba	[177]	Cuba	1940	C32
Cuba – Matanzas Harbor and the Isle of Pines	[178]	Cuba	1936	325
Cuba – Matanzas Harbor and the Isle of Pines	[178]	Cuba	1949	437
Cuba	[179]	Cuba	1952	479
Cuba	[179]	Cuba	1952	482
Turks and Caicos Islands	[180]	Turks and Caicos Islands	1949	97
Turks and Caicos Islands	[180]	Turks and Caicos Islands	1950	111
Hispaniola	[181]	Dominican Republic	1900	111
Hispaniola	[182]	Dominican Republic	1928	C1
Hispaniola	[182]	Dominican Republic	1946	421
Virgin Islands	[183]	Virgin Islands	1951	98
Virgin Islands	[183]	Virgin Islands	1952	113
Virgin Islands – Jost Van Dyke and Anegada	[184]	Virgin Islands	1952	103
Virgin Islands – Jost Van Dyke and Anegada	[184]	Virgin Islands	1952	105
Virgin Islands – Virgin Gorda and Tortuga	[185]	Virgin islands	1952	107
Virgin Islands – Virgin Gorda and Tortuga	[185]	Virgin Islands	1952	108
St. Kitts-Nevis	[186]	St. Kitts-Nevis	1952	109
St. Kitts-Nevis – Anguilla Island	[187]	St. Kitts-Nevis	1948	89
Montserrat	[188]	Montserrat	1951	116
Martinique	[189]	Martinique	1947	J37
Barbados	[190]	Barbados	1950	226
South America	[191]	Brazil	1932	359
South America	[192]	Argentina	1936	445
South America	[192]	Argentina	1937	446
South America	[192]	British Guiana	1938	232
South America	[193]	Ecuador	1942	C93
South America	[194]	Peru	1943	397
South America	[195]	Colombia	1948	C150
South America – The Amazon River	[196]	Spain	1935	556
South America – The Amazon River	[197]	Ecuador	1942	C95
South America – The Amazon River	[197]	Brazil	1943	607
Colombia	[198]	Colombia	1917	H19
Colombia	[198]	Colombia	1951	594
Venezuela	[199]	Venezuela	1938	C119
Venezuela – Sectional Map	[200]	Venezuela	1896	137
Venezuela – Lake Maracaibo	[201]	Venezuela	1950	445
Brazil	[202]	Brazil	1940	498
Ecuador	[203]	Ecuador	1938	R41
Ecuador	[204]	Ecuador	1948	514
Ecuador – The Galapagos Island	[205]	Ecuador	1936	340
Peru	[206]	Peru	1938	377
Peru	[207]	Peru	1947	420
Peru – Plan of the old city of Callao	[208]	Peru	1936	346
Peru – Plan of Fort Real Felipe	[209]	Peru	1936	351
Bolivia	[210]	Bolivia	1928	191
Bolivia	[210]	Bolivia	1931	200
Bolivia	[210]	Bolivia	1932	207
Bolivia	[211]	Bolivia	1935	219
Bolivia	[211]	Bolivia	1935	C42
Bolivia	[211]	Bolivia	1945	C105
Bolivia – Sectional Maps	[212]	Bolivia	1938	246
Bolivia – Sectional Maps	[212]	Bolivia	1938	C71

Paraguay	[213]	Paraguay	1924	254
Paraguay	[213]	Paraguay	1927	290
Paraguay – Chaco Paraguayo	[214]	Paraguay	1932	323
Paraguay	[215]	Paraguay	1939	C121
Argentina	[216]	Argentina	1944	B6
Argentina	[216]	Argentina	1948	C56
Chile – Sectional Map	[217]	Chile	1944	237
Falkland Islands	[218]	Falkland Islands	1933	69
Falkland Islands	[218]	Falkland Islands	1951	110
South America and Antarctica	[219]	Argentina	1951	594
Antarctica Argentina	[220]	Argentina	1947	561
Antarctica Chilena	[221]	Chile	1947	247
Falkland Islands Dependencies	[222]	Falkland Islands Dependencies	1946	1L1
Falkland Islands Dependencies	[222]	Falkland Islands Dependencies	1948	1L13
Antarctica	[223]	Russia	1950	1508
Antarctica	[223]	Russia	1950	1509

Other Walter Klinefelter references in the National Postal Museum Library are:

- *Maps in Miniature: notes critical and historical on their use on postage stamps, with check-list*, Windham [Conn.], Hawthorne House [c1936]. Call Number HE6230.K55X (non-circulating)
- *Illustrations in Miniature; postal designs from books & manuscripts*, [Chicago] The Black Cat Press, 1939. Call Number HE6217.K55X 1939
- A check list of map stamps. Arranged according to the various physical and political divisions of the earth's surface which they delineate and identified for the most part by the type designations assigned to them in *Scott's Standard Postage Stamp Catalogue*, 1954 edition, and in subsequent supplements published in *Scott's Monthly Journal*, [n.p.] Printed for Walter Klinefelter, [1954]. Call Number HE6183.M3K65 1954
- *A further display of old maps and plans*, LaCrosse [Wis.] Sumac Press, 1969. Call Number HE6183.MK5X 1969
- *A small display of old maps and plans*, Iowa City, Prairie Press [c1962]. Call Number HE6183.K55X 1962
- *A third display of old maps and plans; studies in postal cartography*, LaCrosse [Wis.] Sumac Press, 1973. Call Number HE6183.M3K53X 1973
- *A fourth display of old maps and plans; studies in postal cartography*, LaCrosse [Wis.] Sumac Press, 1978. Call Number HE6183.M3K49X 1978
- *Scott's Monthly Journal*, "The World in One's Vestpocket, An Atlas on Postal Paper Recommended for the Use of the Fireside Traveler," in ten parts: September 1943, vol. 24, no. 7, pp. 203-208; October 1943, vol. 24, no. 8, pp. 249-256; November 1943, vol. 24, no. 9, pp. 290-295; December 1943, vol. 24, no. 10, pp. 331-333; January 1944, vol. 24, no. 11, pp. 364-368; March 1944, vol. 25, no. 1, pp. 446-450; June 1944, vol. 25, no. 4, pp. 100-109;

July 1944, vol. 25, no. 5, pp. 136-141; September 1944, vol. 25, no. 7, pp. 203-209;  
December 1944, vol. 25, no. 10, pp. 298-306.

---

**CREDITS & ACKNOWLEDGMENTS**

---

This finding aid was prepared with the assistance of Miklos Pinther, Chief Cartographer, United Nations (retired) and past president of the CartoPhilatelic Society and Museum Specialist James O'Donnell.

Images are taken from the Smithsonian National Postal Museum collection.