

The
S W E E T N E S S
at the **B O T T O M**
of the **P I E**



Smithsonian
National Postal Museum

A Flavia de Luce Novel

FURTHER READING

Additional information on the objects highlighted in the Postmarks & Paperbacks program can be found in the following articles and posts. The Flavia de Luce series includes a total of eleven other works, all of which are also listed below.

NPM OBJECTS:



When the de Luce family finds a dead Jack Snipe on their front doorstep, a [Penny Black](#) is affixed to its beak. Though the Ulster Avengers were intentionally manufactured using the same die plate as the Penny Black, simply using a different color ink, there are many other early postage stamps that use the same likeness of Queen Victoria. These all represented different rates, which was easily identified by the color of the image. In 2004-2005, the National Postal Museum displayed a number of rare stamps from the Queen's personal collection. [The Queen's Own: Stamps that Changed the World](#), featured the Penny Black, the Twopenny Blue, and the Penny Red, among others. [The Postal Museum](#) in London, England, features extensive information on these early stamps as well, where you can read about [the design and printing process specific to the Penny Black](#).

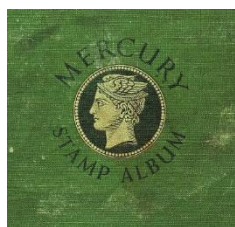
The errored stamp now known as the [Inverted Jenny](#), famously occurred during the two-color printing process. Further information on how this error came to be can be found in the [Adding a Second Color](#) section of the online exhibit, [Stamps Take Flight](#).



The printing process was rife with opportunities for mistakes, as you can see in the museum's [William H. Gross Stamp Gallery](#). The [5c Washington error in 2c Washington block of twelve](#), is not the only error the museum has in its collection. Visit our [National Stamp Salon](#) to see many more, including the [1959 St. Lawrence Seaway Opening](#) stamp issue, which was also [printed as an invert](#).

The [5c Jefferson Davis De La Rue Confederate printing plate](#) and the [5c Jefferson Davis single](#), aren't the only example of Confederate philatelic materials the museum has. In fact, the very first object the Smithsonian collected as the National Philatelic Collection, was a sheet of Confederate stamps known as the Robertson Confederate Pane. Read more about the start of our collection, in our online article, [Collection Starters: The Robertson Confederate Pane and The Post Office Pembina Photograph](#).





His [philatelic tongs](#) and [perforation gauge](#) were essential tools Simon Wiesenthal used in his stamp collecting hobby. But he and [John Lennon](#) are far from the only famous philatelists in history. Read more about others, including Charlie Chaplin, Amelia Earhart, Franklin Delano Roosevelt, and Ayn Rand among others, on the museum's website, [Noteworthy Stamp Collectors](#).

Notably home for the National Philatelic Collection, the National Postal Museum is also home to hundreds of thousands of [international stamps](#), including the [William H. Gross Stamp Salon's](#) display of at least one stamp from every country, such as the [2½p Mt. Hood stamp](#) from New Zealand..



Covers, or envelopes, such as the one used to mail the [Hope Diamond](#) to the Smithsonian, can provide a lot of [Clues to a Letter's Journey](#). Another unexpected cover in the museum's collection is the [Apollo 15 Lunar Mail cover](#), which was [hand cancelled by Astronaut Dave Scott](#) next to the lunar module on August 2, 1971.

FLAVIA DE LUCE BOOK SERIES:

- ❧ *The Weed That Strings the Hangman's Bag* (Flavia de Luce #2)
- ❧ *A Red Herring Without Mustard* (Flavia de Luce #3)
- ❧ *I am Half-Sick of Shadows* (Flavia de Luce #4)
- ❧ *Speaking from Among the Bones* (Flavia de Luce #5)
- ❧ *The Dead in Their Vaulted Arches* (Flavia de Luce #6)
- ❧ *The Curious Case of the Copper Corpse* (Flavia de Luce #6.5)
- ❧ *As Chimney Sweepers Come to Dust* (Flavia de Luce #7)
- ❧ *Thrice the Brinded Cat Hath Mew'd* (Flavia de Luce #8)
- ❧ *The Grave's a Fine and Private Place* (Flavia de Luce #9)
- ❧ *The Golden Tresses of the Dead* (Flavia de Luce #10)

