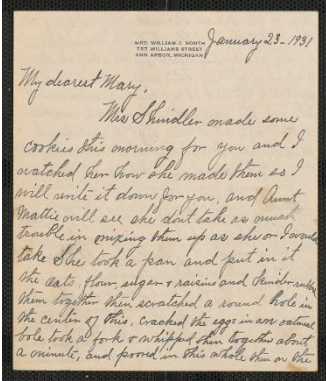


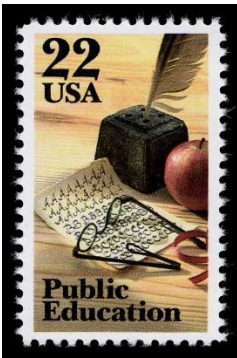
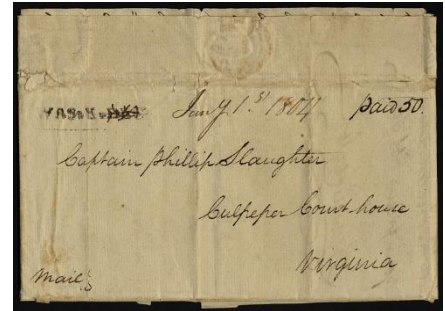
FURTHER RESOURCES

Additional information on the objects and themes highlighted in the Postmarks & Paperbacks program can be found in the following articles, exhibitions, books, and blogposts.



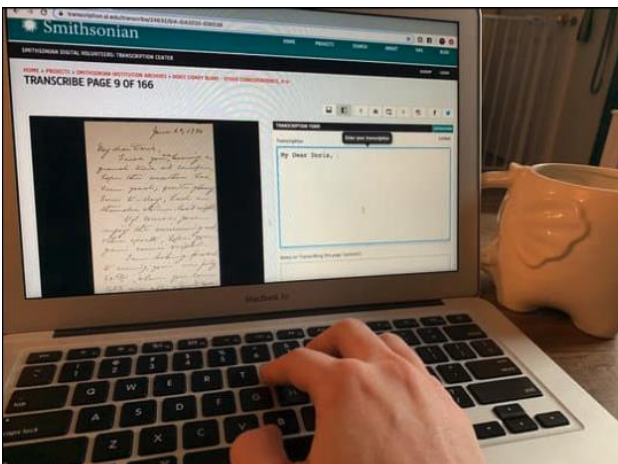
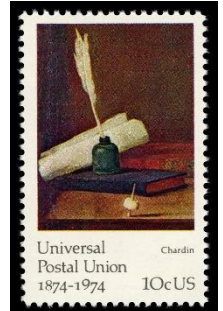
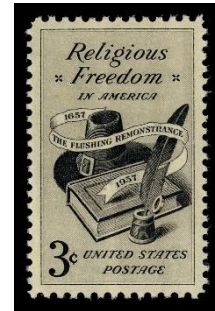
Letters from the Collection

- [Ben Franklin Free Frank Cover](#)
- [Stampless Cover](#)
- [J Wells Wight Letter](#)
- [Benjamin Harrison Letter](#)
- [Letter from Clara Booth to Mary Slade](#)



Stamps from the Collection

- [10c Jean-Baptiste Chardin "Inkwell & Quill" Single](#)
- [1c Inkwell & Quill Single](#)
- [3c Religious Freedom Single](#)
- [22c Public Education Single](#)



Smithsonian Transcription Center:

Help the Smithsonian decipher historical handwriting!

- Become a Smithsonian Digital Volunteer and help us make historical documents and biodiversity data more accessible. Since June of 2013, our community of "volunpeers" have collaboratively transcribed and reviewed over a million pages of field notes, diaries, ledgers, logbooks, currency proof sheets, photo albums, manuscripts, biodiversity specimen labels, and historic audio recordings

Dead Letter Album

- Read about the Dead Letter Office, where letters whose destination could not be deciphered were sent



Smithsonian
National Postal Museum

