

FURTHER RESOURCES

Additional information on the objects and themes highlighted in the Postmarks & Paperbacks program can be found in the following articles, exhibitions, books, and blogposts.

Antarctica

[Information on sending mail in Antarctica](#)

[The 19th Maynard Sundman Lecture | National Postal Museum \(si.edu\)](#)

[Little America, Antarctica Post Office](#)

[World's Most Remote Post Office](#)

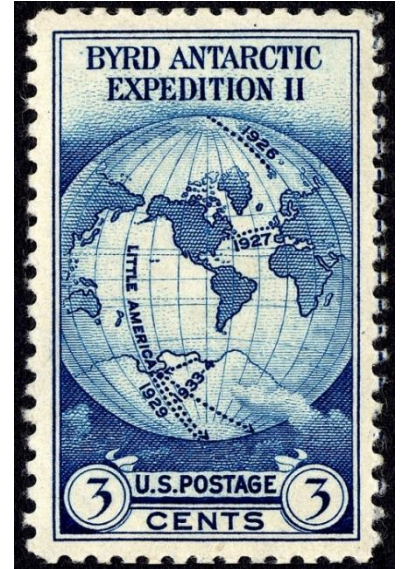
[Loneliest Post Office](#)

[Antarctic Philately](#)

[Little America Post Office safe](#)

[3c Byrd Antarctic Expedition single](#)

[2sh Australian Explorers and Map of Antarctica single](#)



Washington

[Explore America: Washington | National Postal Museum \(si.edu\)](#)

[33c Blackberries single](#)

[33c Pacific Coast Rain Forest pane of ten](#)

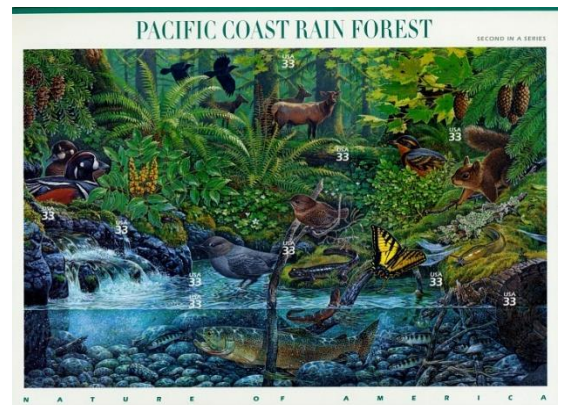
Mystery and crime

[Cover addressed to Robert A. Pinkerton at his Detective Agency address](#)

[100 lire St. Bernadette single](#)

[Postal Inspector "Raid" badge](#)

[Fake letter regarding money orders](#)



Architecture

[20c American Architecture block of four](#)

[37c Modern American Architecture pane of twelve](#)



Smithsonian
National Postal Museum