

“A Nation at War: Contrasting Postal Systems”



WHEN THE MAIL GOES TO WAR

“A Nation at War: Contrasting Postal Systems”

The war between the Union and the Confederacy raged from 1861 until 1865. The impact of the war on the mails manifested itself in many ways. Besides establishing a new and separate postal service in the Confederacy and creating new issues of stamps for both sides, it affected the mail's rates, routes and postal markings. The Union had a financial and industrial advantage over the Confederacy, and this affluence is visible through the window of their postal systems.

The focus of this presentation will be those postal markings, of which I will endeavor to show a sampling, many of which take the form of cancellations. The majority of these cancels were fashioned by the local postmasters in their individual post offices and not by the U.S. Post Office. This showed the attitude of many individuals as opposed to a mandate from the federal government. The cancels have been arranged by lowest denomination first, within each of the two issues that were available during the conflict; the 1857 issue and the 1861 issue.

The earliest usages of what could be termed “patriotic cancels” are found on late in the life of the 1857 issue, which were valid for postage until the autumn of 1861. The following are some examples of the cancels on the 1857 issue.

WHEN THE MAIL GOES TO WAR

“A Nation at War: Contrasting Postal Systems”



FLAG - EX NEWBURY
WOMELSDORF, PA
SE PT-F 10



Smithsonian
National Postal Museum

Postal History Symposium

American Philatelic Society



WHEN THE MAIL GOES TO WAR

“A Nation at War: Contrasting Postal Systems”



**“34” IN CENTER OF STAR IN CIRCLE
EX NEWBURY**

**“ 34TH MASSACHUSETTS VOLUNTEERS”
HATFIELD, MA -
SE ST-C 5**



Smithsonian
National Postal Museum

Postal History Symposium

American Philatelic Society



WHEN THE MAIL GOES TO WAR

“A Nation at War: Contrasting Postal Systems”



SHIELD OF DOTS & BARS

UNLISTED



Smithsonian
National Postal Museum

Postal History Symposium

American Philatelic Society



WHEN THE MAIL GOES TO WAR

“A Nation at War: Contrasting Postal Systems”



SHIELD OF BARS

SE PS-O 32



Smithsonian
National Postal Museum

Postal History Symposium

American Philatelic Society



WHEN THE MAIL GOES TO WAR

“A Nation at War: Contrasting Postal Systems”



SHIELD OF DOTS & BARS



Smithsonian
National Postal Museum

Postal History Symposium

American Philatelic Society



WHEN THE MAIL GOES TO WAR

“A Nation at War: Contrasting Postal Systems”



SHIELD OF BARS

UNLISTED



Smithsonian
National Postal Museum

Postal History Symposium

American Philatelic Society



WHEN THE MAIL GOES TO WAR

“A Nation at War: Contrasting Postal Systems”



SHIELD OF STARS & BARS
UNLISTED



Smithsonian
National Postal Museum

Postal History Symposium

American Philatelic Society



WHEN THE MAIL GOES TO WAR

“A Nation at War: Contrasting Postal Systems”



SHIELD OF BARS
UNLISTED



Smithsonian
National Postal Museum

Postal History Symposium

American Philatelic Society



WHEN THE MAIL GOES TO WAR

“A Nation at War: Contrasting Postal Systems”



FLAG IN CIRCLE
NAPERVILLE, IL
SE PT-F 20



Smithsonian
National Postal Museum

Postal History Symposium

American Philatelic Society



WHEN THE MAIL GOES TO WAR

“A Nation at War: Contrasting Postal Systems”



FLAG WITH 5 STARS

WEST HAVEN, CT

SE PT-F 25



Smithsonian
National Postal Museum

Postal History Symposium

American Philatelic Society



WHEN THE MAIL GOES TO WAR

“A Nation at War: Contrasting Postal Systems”

On December 20th, 1860 South Carolina was the first state to secede. On January 9th, 1861, Mississippi joined South Carolina and on the following day, Florida enlisted and a day later, Alabama seceded. Others followed and by May 20th, 1861, North Carolina became the last state to join the new Confederacy, totaling eleven states. Although Delaware, Maryland, Kentucky and Missouri remained slave states, they stayed in the Union.

WHEN THE MAIL GOES TO WAR

“A Nation at War: Contrasting Postal Systems”



STRAIGHT LINE "UNION"

CHESTER, CT
SE PT-UN 1



Smithsonian
National Postal Museum

Postal History Symposium

American Philatelic Society



WHEN THE MAIL GOES TO WAR

“A Nation at War: Contrasting Postal Systems”



**BACKWARDS “US” IN HOLLOW 5 POINT STAR
SURROUNDED BY “UNION”**

THREE RIVERS, MI
SE ST-C 17



Smithsonian
National Postal Museum

Postal History Symposium

American Philatelic Society



WHEN THE MAIL GOES TO WAR

“A Nation at War: Contrasting Postal Systems”

As you can see from this cancel, the stamp was used on April 18th 1861; over 3 months after Alabama seceded. The Union saw that the Confederate government was selling Union issued stamps and hence helping to fund the war with their own accountable paper. So, the Union demonetized the 1857 stamps and issued new stamps in the fall of 1861.

However, people continued to use the demonetized stamps and these usages are very desirable.

WHEN THE MAIL GOES TO WAR

“A Nation at War: Contrasting Postal Systems”



“MOBILE ALA” CONFEDERATE USE
APRIL 18TH, 1861



Smithsonian
National Postal Museum

Postal History Symposium

American Philatelic Society



WHEN THE MAIL GOES TO WAR

“A Nation at War: Contrasting Postal Systems”



“OLD STAMPS / NOT RECOGNIZED”
PHILADELPHIA, PA (RESTORED AND REPAIRED)
SE PM-OS 1



Smithsonian
National Postal Museum

Postal History Symposium

American Philatelic Society



WHEN THE MAIL GOES TO WAR

“A Nation at War: Contrasting Postal Systems”

The stamps of the 1861 issue show far more patriotic cancels than the 1857 issue, since those stamps availability in the post offices extended from late 1861 until 1869. Here are some examples on the 1 cent stamp of 1861.

WHEN THE MAIL GOES TO WAR

“A Nation at War: Contrasting Postal Systems”



“OLD STAMPS / NOT RECOGNIZED”

PHILADELPHIA, PA
SE PM-OS 1



Smithsonian
National Postal Museum

Postal History Symposium

American Philatelic Society



WHEN THE MAIL GOES TO WAR

“A Nation at War: Contrasting Postal Systems”



BLUE “OLD STAMPS” / *Not Recognized*

CHICAGO, IL
SE PM-OS 2



Smithsonian
National Postal Museum

Postal History Symposium

American Philatelic Society



WHEN THE MAIL GOES TO WAR

“A Nation at War: Contrasting Postal Systems”



Smithsonian
National Postal Museum

Postal History Symposium

American Philatelic Society



WHEN THE MAIL GOES TO WAR

“A Nation at War: Contrasting Postal Systems”



SOUTH: LETTER
UNPAID.

LETTER
AID.



Smithsonian
National Postal Museum

Postal History Symposium

American Philatelic Society



WHEN THE MAIL GOES TO WAR

“A Nation at War: Contrasting Postal Systems”



“UNION” & FLAG

HEALDSBURG, CA

SE PT-F 33

Postal History Symposium



Smithsonian
National Postal Museum

American Philatelic Society



WHEN THE MAIL GOES TO WAR

“A Nation at War: Contrasting Postal Systems”



UNION SOLDIER'S HEAD

NEW YORK
SE PH-F 72



Smithsonian
National Postal Museum

Postal History Symposium

American Philatelic Society



WHEN THE MAIL GOES TO WAR

“A Nation at War: Contrasting Postal Systems”



CIRCULAR RADIAL

6 PETAL FLOWER OF ATHENS, GA ON OATMEAL ADVERSITY COVER
SE GE-R 13



Smithsonian
National Postal Museum

Postal History Symposium

American Philatelic Society



WHEN THE MAIL GOES TO WAR

“A Nation at War: Contrasting Postal Systems”



SHIELD - SOLID TOP
CAMBRIDGE, MA
SE PS-S 15



Smithsonian
National Postal Museum

Postal History Symposium

American Philatelic Society



WHEN THE MAIL GOES TO WAR

“A Nation at War: Contrasting Postal Systems”



SHIELD - OPEN TOP

NEW YORK
SE PS-O 30



Smithsonian
National Postal Museum

Postal History Symposium

American Philatelic Society



WHEN THE MAIL GOES TO WAR

“A Nation at War: Contrasting Postal Systems”



SHIELD - SOLID TOP
CAMDEN, NJ
SE PS-S 9



Smithsonian
National Postal Museum

Postal History Symposium

American Philatelic Society



WHEN THE MAIL GOES TO WAR

“A Nation at War: Contrasting Postal Systems”



EAGLE

CAMBRIDGE, MA
SE PA-B23



Smithsonian
National Postal Museum

Postal History Symposium

American Philatelic Society



WHEN THE MAIL GOES TO WAR

“A Nation at War: Contrasting Postal Systems”



SHIELD
WATERBURY, CT - WORN
ROHLOFF Q-3



SHIELD
WATERBURY, CT
ROHLOFF Q-3



NEGATIVE "PAID" IN SHIELD
DEDHAM, MA
SE PM-PE 4



NEGATIVE "PAID" IN SHIELD
DEDHAM, MA
SE PS-C 13



Smithsonian
National Postal Museum

Postal History Symposium

American Philatelic Society



WHEN THE MAIL GOES TO WAR

“A Nation at War: Contrasting Postal Systems”



SHIELD
UNLISTED



SHIELD WITH STAR
WILLISTON, VT
SE PS-ST 52



SHIELD WITH “X”s
BOSTON, MA
SE PS-ST 27



SHIELD WITH CENTER STAR
MADALIN, NY
SE PS-C 9



WHEN THE MAIL GOES TO WAR

“A Nation at War: Contrasting Postal Systems”



SHIELD IN HEART
BRIDGEPORT, CT
SE PH-H 60



SHIELD WITH STARS
SACRAMENTO, CA
SE PS-FC 52



“US” IN SHIELD IN CIRCLE
SE PT-C 14



SHIELD IN GEARED CIRCLE
SOUTH LANCASTER, PA
SE PS-FC 9



Smithsonian
National Postal Museum

Postal History Symposium

American Philatelic Society



WHEN THE MAIL GOES TO WAR

“A Nation at War: Contrasting Postal Systems”



SHIELD
NEW YORK
SE PS-O 8



Smithsonian
National Postal Museum

Postal History Symposium

American Philatelic Society



WHEN THE MAIL GOES TO WAR

“A Nation at War: Contrasting Postal Systems”



BLUE SHIELD WITH STARS

DAVENPORT, IA
SE PS-ST 23



Smithsonian
National Postal Museum

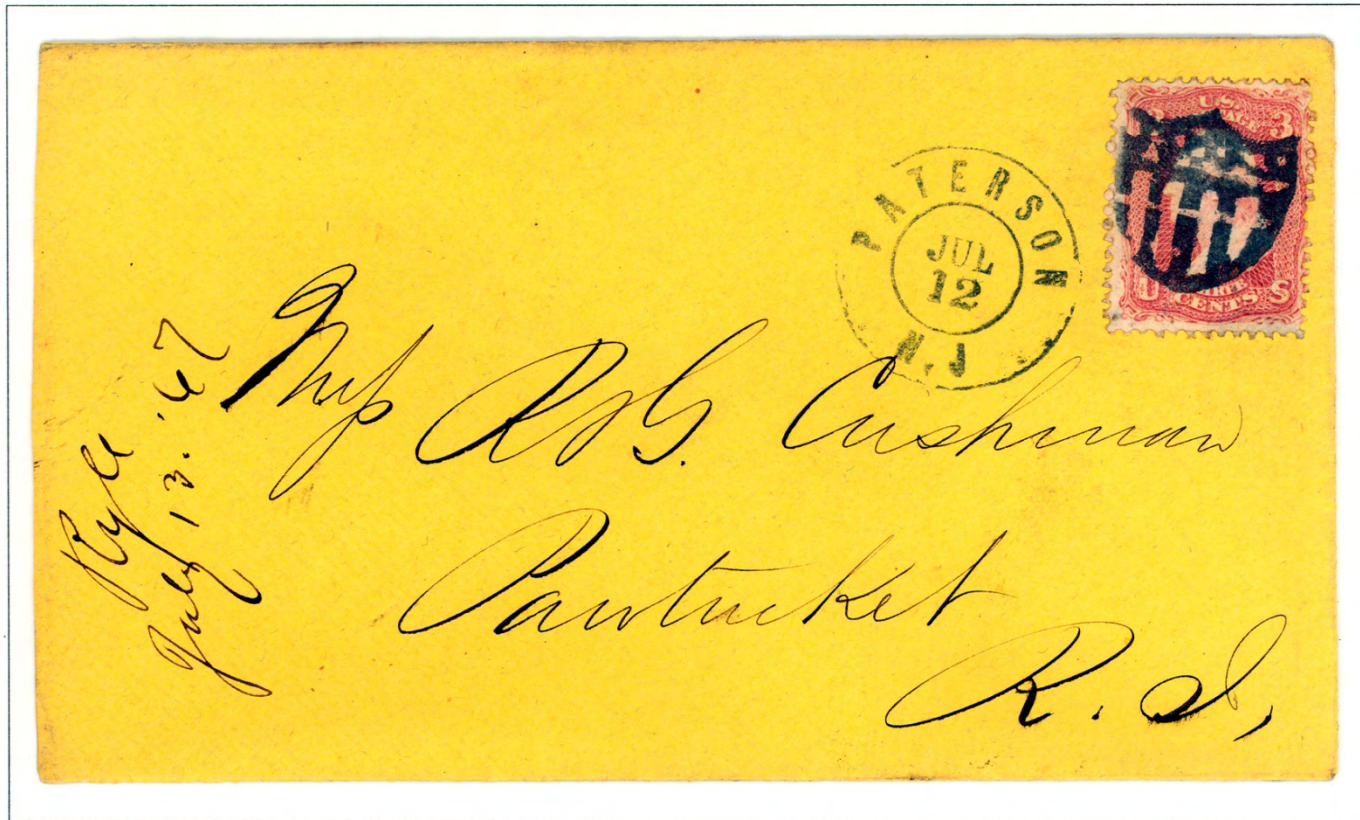
Postal History Symposium

American Philatelic Society



WHEN THE MAIL GOES TO WAR

“A Nation at War: Contrasting Postal Systems”



SHIELD WITH STARS AT TOP

PATERSON, NJ
SE PS-ST 19



Smithsonian
National Postal Museum

Postal History Symposium

American Philatelic Society



WHEN THE MAIL GOES TO WAR

“A Nation at War: Contrasting Postal Systems”



SMALL BLUE SHIELD WITH NEGATIVE EAGLE AT TOP

JACKSONVILLE, FL - EAGLE NOT NOTED IN SKINNER-ENO DUE TO POOR ILLUSTRATION FROM SOURCE
SE ST-C 21



Smithsonian
National Postal Museum

Postal History Symposium

American Philatelic Society



WHEN THE MAIL GOES TO WAR

“A Nation at War: Contrasting Postal Systems”



SHIELD WITH STARS AT TOP

PITTSFIELD, MA
SE PS-ST 47



Smithsonian
National Postal Museum

Postal History Symposium

American Philatelic Society



WHEN THE MAIL GOES TO WAR

“A Nation at War: Contrasting Postal Systems”



FLAG
HEALDSBURG, CA
SE PT-F 33



FLAG IN CIRCLE
SE PT-F 21



FLAG
WEST POINT, GA
UNLISTED



FLAG
CARTHAGE, IL
SE PT-F 11



Smithsonian
National Postal Museum

Postal History Symposium

American Philatelic Society



WHEN THE MAIL GOES TO WAR

“A Nation at War: Contrasting Postal Systems”



SOLDIER'S HEAD

NEW YORK

SE PH-F 73



Smithsonian
National Postal Museum

Postal History Symposium

American Philatelic Society



WHEN THE MAIL GOES TO WAR

“A Nation at War: Contrasting Postal Systems”



**EAGLE WITH SMALL SHIELD
ON BRANCH**
CORY, PA
SE PT-E 4



EAGLE WITH SHIELD
WATERBURY, CT
ROHLOFF A-7



EAGLE ON BRANCH
WOONSOCKET FALLS, RI
SE PT-E 8



EAGLE ATOP “US”
ALBANY, NY
SE PT-E 12



Smithsonian
National Postal Museum

Postal History Symposium

American Philatelic Society



WHEN THE MAIL GOES TO WAR

“A Nation at War: Contrasting Postal Systems”



EAGLE WITH SHIELD
CAMBRIDGE, MA
SE PT-E 5



EAGLE WITH SHIELD
SE PT-E 7



EAGLE
CAMBRIDGE, MA
UNLISTED

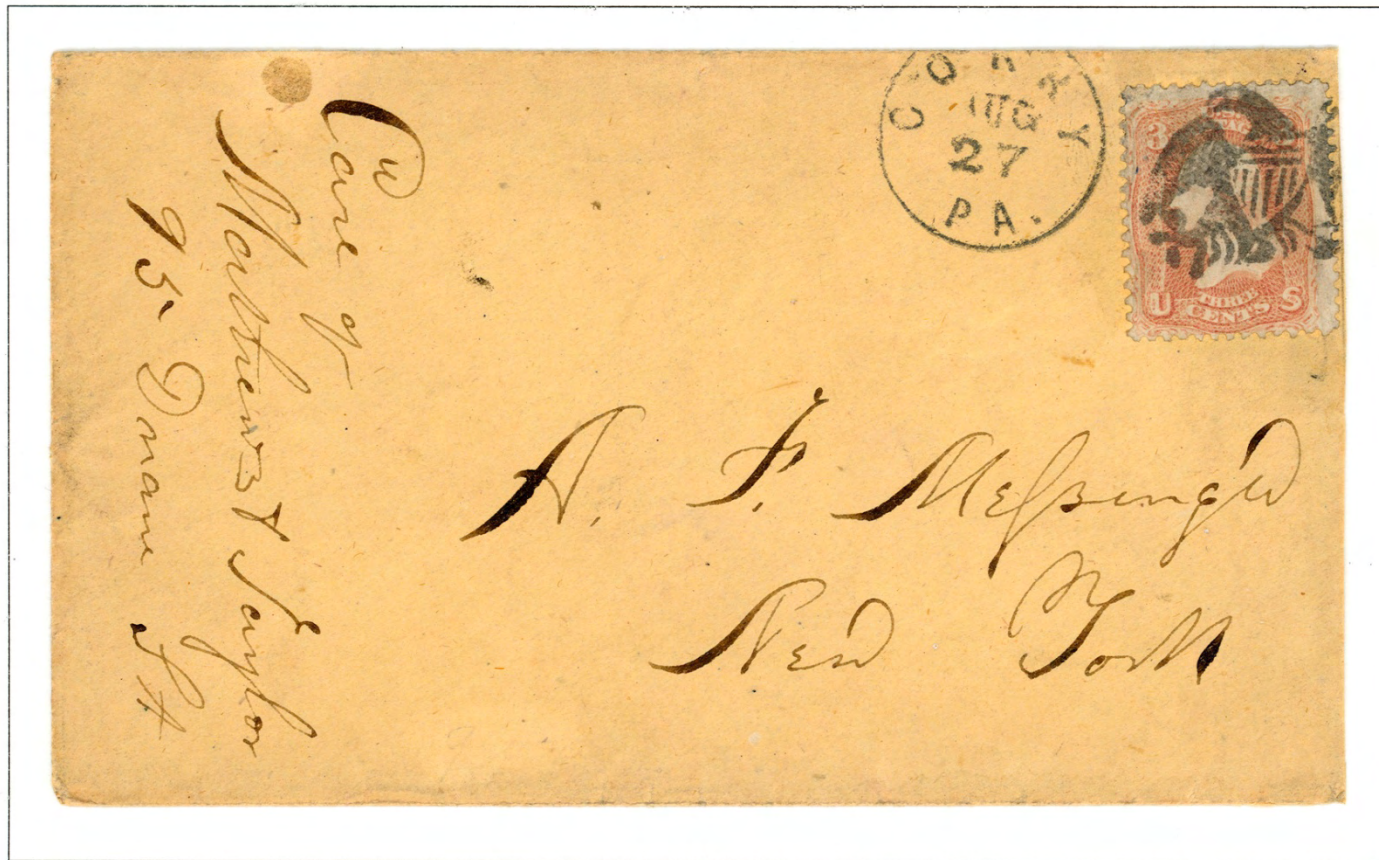


EAGLE
CAMBRIDGE, MA
SE PA-B 23A



WHEN THE MAIL GOES TO WAR

“A Nation at War: Contrasting Postal Systems”



EAGLE WITH LARGE SHIELD ON BRANCH

CORRY, PA
SE PT-E 1



Smithsonian
National Postal Museum

Postal History Symposium

American Philatelic Society



WHEN THE MAIL GOES TO WAR

“A Nation at War: Contrasting Postal Systems”



ELABORATE EAGLE WITH TOWN SLUG OF “KINGSESSING PA”

KINGSESSING, PA - THIS BLANK WAS AVAILABLE TO MANY TOWNS
SE PM-TF 15



Smithsonian
National Postal Museum

Postal History Symposium

American Philatelic Society



WHEN THE MAIL GOES TO WAR

“A Nation at War: Contrasting Postal Systems”



NEGATIVE “UNION” IN STAR POINTS WITH STAR IN CENTER

WEST HAMPTON, MA

SE ST-C 14



Smithsonian
National Postal Museum

Postal History Symposium

American Philatelic Society



WHEN THE MAIL GOES TO WAR

“A Nation at War: Contrasting Postal Systems”



NEGATIVE "UNION" & STAR IN BLUE PENTAGON
MITTINEAGUE, MA
SE PS-C 15



Smithsonian
National Postal Museum

Postal History Symposium

American Philatelic Society



WHEN THE MAIL GOES TO WAR

“A Nation at War: Contrasting Postal Systems”



NEGATIVE “U” (UNION) IN 6 POINT STAR IN CIRCLE

NEW YORK
SE ST-C 21



Smithsonian
National Postal Museum

Postal History Symposium

American Philatelic Society



WHEN THE MAIL GOES TO WAR

“A Nation at War: Contrasting Postal Systems”



LARGE “UNION” IN SHIELD
NEW YORK
SE PT-UN 4



Smithsonian
National Postal Museum

Postal History Symposium

American Philatelic Society



WHEN THE MAIL GOES TO WAR

“A Nation at War: Contrasting Postal Systems”



BLUE “US” IN CIRCLE
ATLANTA, GA
UNLISTED



Smithsonian
National Postal Museum

Postal History Symposium

American Philatelic Society



WHEN THE MAIL GOES TO WAR

“A Nation at War: Contrasting Postal Systems”



BLUE “US” IN CIRCLE

ATLANTA, GA

SE PT-US 57



Smithsonian
National Postal Museum

Postal History Symposium

American Philatelic Society



WHEN THE MAIL GOES TO WAR

“A Nation at War: Contrasting Postal Systems”



“US” SHIELD WITH STARS

BOSTON, MA

SE PT-C 9



Smithsonian
National Postal Museum

Postal History Symposium

American Philatelic Society



WHEN THE MAIL GOES TO WAR

“A Nation at War: Contrasting Postal Systems”



**“US” IN NEGATIVE SHIELD
IN CIRCLE OF
NEGATIVE STARS**
ALBANY, NY
SE PT-C 18



**“US” IN NEGATIVE CIRCLE
IN CIRCLE OF
NEGATIVE STARS**
ALBANY, NY
SE PT-C 19



WHEN THE MAIL GOES TO WAR

“A Nation at War: Contrasting Postal Systems”



“US” IN CIRCLE
KEESEVILLE, NY
SE PT-US 61



“USA”
NEW YORK
SE PT-USA 5A



Smithsonian
National Postal Museum

Postal History Symposium

American Philatelic Society



WHEN THE MAIL GOES TO WAR

“A Nation at War: Contrasting Postal Systems”



**NEGATIVE “USA” IN
CIRCLE WITH NEGATIVE STARS**

ALBANY, NY
SE PT-USA 1



“US” IN SEGMENTED FRAME

PUTNAM, CT
SE PT-C 23



Smithsonian
National Postal Museum

Postal History Symposium

American Philatelic Society



WHEN THE MAIL GOES TO WAR

“A Nation at War: Contrasting Postal Systems”



BLUE SHADOWED “US”

CHEYENNE, WY - TERRITORIAL CANCEL
UNLISTED



Smithsonian
National Postal Museum

Postal History Symposium

American Philatelic Society



WHEN THE MAIL GOES TO WAR

“A Nation at War: Contrasting Postal Systems”



UNION SOLDIER'S HEAD

NEW YORK, NY

SE PH-F 73



Smithsonian
National Postal Museum

Postal History Symposium

American Philatelic Society



WHEN THE MAIL GOES TO WAR

“A Nation at War: Contrasting Postal Systems”



“PAID” SHIELD WITH STARS & STRIPES

DEDHAM, MA

SE PM-PE 4



Smithsonian
National Postal Museum

Postal History Symposium

American Philatelic Society



WHEN THE MAIL GOES TO WAR

“A Nation at War: Contrasting Postal Systems”



BLUE SHIELD
MEMPHIS, TN
SE PS-FC 20



SHIELD WITH STARS & BARS
SACRAMENTO, CA
SE PS-ST 43



BLUE SHIELD IN CIRCLE
CHICAGO, IL
SE PS-FC 12



WHEN THE MAIL GOES TO WAR

“A Nation at War: Contrasting Postal Systems”



SHEILD WITH STARS AND BARS

DAYTON, OH
SE PS-ST 12



BLUE SHEILD WITH STARS AND BARS

SACRAMENTO, CA
SE PS-ST 43



Smithsonian
National Postal Museum

Postal History Symposium

American Philatelic Society



WHEN THE MAIL GOES TO WAR

“A Nation at War: Contrasting Postal Systems”



SOLDIER'S HEAD
NEW YORK FOREIGN MAIL
SE PH-F 72



Smithsonian
National Postal Museum

Postal History Symposium

American Philatelic Society



WHEN THE MAIL GOES TO WAR

“A Nation at War: Contrasting Postal Systems”



CANNON
NEWCASTLE, PA
SE PO-Ms 5



Smithsonian
National Postal Museum

Postal History Symposium

American Philatelic Society



WHEN THE MAIL GOES TO WAR

“A Nation at War: Contrasting Postal Systems”



BLUE UNION SOLDIER'S CAP

WORCESTER, MA

SE PO-HT 9



Smithsonian
National Postal Museum

Postal History Symposium

American Philatelic Society



WHEN THE MAIL GOES TO WAR

“A Nation at War: Contrasting Postal Systems”



CAVALRY BOOT IN CIRCLE

HOPKINTON, MA

SE PO-BT 5



Smithsonian
National Postal Museum

Postal History Symposium

American Philatelic Society



WHEN THE MAIL GOES TO WAR

“A Nation at War: Contrasting Postal Systems”



**“A.J.” (ANDREW JOHNSON)
IN TOMBSTONE WITH
SKULL & CROSSBONES
WATERBURY, CT
ROHLOFF R-5**



Smithsonian
National Postal Museum

Postal History Symposium

American Philatelic Society



WHEN THE MAIL GOES TO WAR

“A Nation at War: Contrasting Postal Systems”



PEACE DOVE
NEW YORK - WORN STRIKE
SE PA-B 9



PEACE DOVE
NEW YORK
SE PA-B 9



WHEN THE MAIL GOES TO WAR

“A Nation at War: Contrasting Postal Systems”



BLUE MAN THUMBING NOSE

SE PH-F 3



Smithsonian
National Postal Museum

Postal History Symposium

American Philatelic Society



WHEN THE MAIL GOES TO WAR

“A Nation at War: Contrasting Postal Systems”



Smithsonian
National Postal Museum

Postal History Symposium

American Philatelic Society

